

FLAP VALVE HDPE / SS316

INSTALLATION MANUAL FOR FLAT WALL MOUNTING TILL 5 M.W.C.



PLEASE READ THESE INSTRUCTIONS CAREFULLY BEFORE STARTING THE INSTALLATION!

The installation instruction as described below must be followed in the correct order. If the installation is not being executed according to our instructions, we can't be held responsible for any damage that may occur after an incorrect installation (In this case, we reject all liability).

Please check the goods supplied by Aquafix for completeness and any damages. Report any defects or damage to us immediately upon receipt of the goods.

In the event of any ambiguities, we recommend to consult our product specialist. He will be able to help and/or advise.

PREPARATION

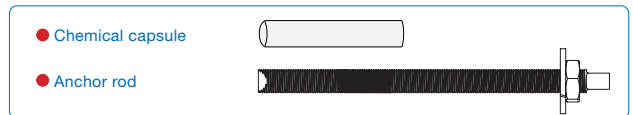
- Please check flatness of the wall with a ruler at the location of the frame plate of the flap valve
- Also check the concrete wall for minor blemishes/bumps, to secure a correct functioning of the neoprene tape, which will be fixed onto the back of the frame plate.

COMMISSIONING OF THE FLAP VALVE

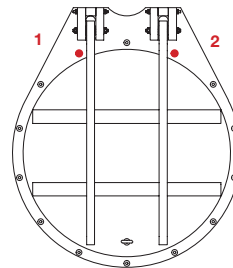
- Check if the valve works properly, by opening and closing the door several times. There must be a sealing between the door and the frame plate.

INSTALLATION

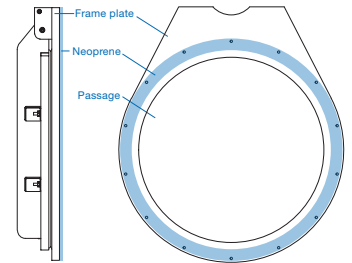
1. The flap valve needs to be level-mounted end in such a way that the passage is situated exactly in front of the outlet of the civil construction.
2. Mark the locations of the two outer chemical anchor holes on top of the valve. **Please note:** These holes will be next to the hinges for the larger flap valves and for the smaller flap valves, the holes will be next to the opening. (image A: ●)
3. Remove the flap valve from the wall.
4. Drill both holes and mount the chemical anchors as instructed by the supplier of the chemical anchors. **Take note** of the time which is required for hardening of the chemical.
5. Hang the flap valve on these two cured anchors.
6. Mark the remaining anchor holes onto the wall.
7. Take the flap valve of the wall again and drill the remaining marked anchor holes.
8. Insert the chemical capsules in the remaining holes and mount the chemical anchors as instructed by the supplier of the chemical anchors.
9. Clean the wall plate and stick the neoprene sealing tape around the passage over the anchor holes. Make sure that most of the neoprene tape falls inside the anchors (image B).
In case of wet weather, the tape may also be stapled to the frame plate
Please note: In case it will be stapled, that the staples are placed deep enough (image C).
10. It is very important to make the holes into the neoprene for the anchors before putting the flap valve back onto the wall. **DO NOT** pierce the anchors through the neoprene itself, will damage the neoprene and cause leakage.
11. Put the flap valve back onto the wall, by hanging it onto the mounted anchors.
12. Tighten the anchors gradually one by one without deforming the frame plate, to create a good seal with the wall. Check the evenness.
13. Also check that the frame is not deformed in such a way, that the lip seal of the flap valve door will not seal properly against the frame plate.



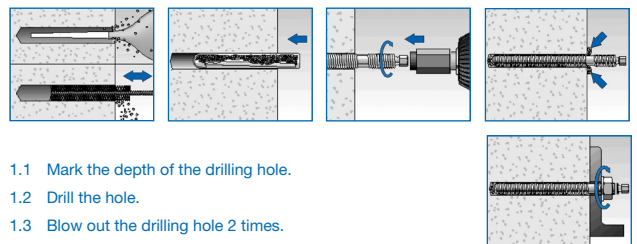
A Front view
Tightening diagram



B Side & Back view
Neoprene sealing tape



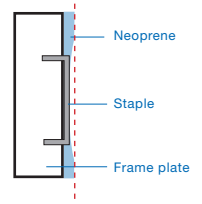
CHEMICAL ANCHORS INSTRUCTION



- 1.1 Mark the depth of the drilling hole.
- 1.2 Drill the hole.
- 1.3 Blow out the drilling hole 2 times.
- 2.1 Brush the drilling holes 2 times.
- 2.2 Blow out the drilling holes 2 times.

- 3.1 Check if the chemical capsule is not damaged.
- 3.2 Put the chemical capsule into the drilling hole.
- 4.1 Drill the anchor rod in the drilling hole by means of a drilling machine.
Turn/drill the anchor rod fully through the chemical capsule.
- 4.2 Note the time.
- 5.1 Take note of the needed hardening time, before going further with final installation. (see diagram left)

C Enlarged view
Stapled Neoprene



SPECIAL CARE REGARDING CHEMICAL ANCHORS

Please take note of the needed hardening time for the chemical anchors.

	M8	M10	M12
	80mm	85mm	95mm
	Ø10	Ø12	Ø14
	80mm	90mm	110mm
	10Nm	20Nm	40Nm

°C	°F	Time
> 20°	> 68°	= 20 min...
10 - 20°	50° - 68°	= 40 min...
5° - 10°	41° - 50°	= 90 min...
0° - 5°	32° - 41°	= 180 min...
-5° - 0°	23° - 32°	= 360 min...

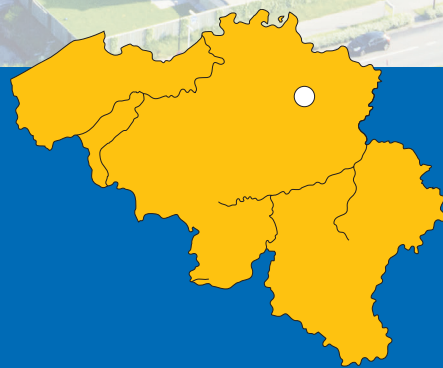
AQUAFIX MILIEU®

YOUR PARTNER FOR THE FUTURE

Over **30** Years
EXPERIENCE
AND KNOW-HOW



Netherlands:
AQUAFIX MILIEU BV
Genieweg 20 - 30
NL-3641 RH MIJDRECHT
T: +31 297 26 29 29
info@aquafix.nl



Belgium:
AQUAFIX BELGIUM BVBA
Dwarsstraat 6A
BE-2430 LAAKDAL
T: +32 13 66 83 03
info@aquafix.be

WWW.AQUAFIX.EU