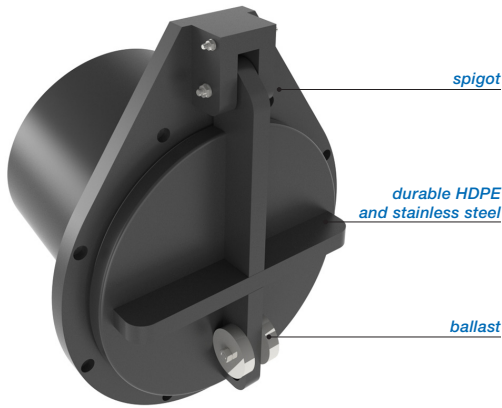


FLAP VALVE - HDPE / SS316L TYPE SPIGOT END FOR SOCKET/COUPLING MOUNTING (S), Ø110 - 600 MM.



The Freedrain® non-return valve is standard mounted at an angle of 10 degrees. The flap valve will mostly installed partly or completely submerged (in surface water / sewage / in case of emergency / flood protection), regulating a water flow in a single direction and preventing any back flow. The flap valve can be applied practically in all kinds of environments with free flow / gravitation. These flap valves are manufactured in our own factory from high quality HDPE, which is lightweight material and has a high chemical resistance. The flap valve will be equipped with SS316L hinge pins and extra ballast weight to prevent the flap valve door from floating. The larger flap valves will be equipped with SS316L reinforcement profiles.

The On-seating tightening shall be effected by means of a special EDPM lip seal to withstand 1 meter water column (long duration - 50 years) above the culvert and 5 meter water column from bottom invert (short duration - 72 hours) without any visible deformation. The flap valves shall be water tight in on-seating situation.

The ATK-S version with spigot is suitable for socket/coupling connection. However, the non-return flap valve can also be supplied with spigot end (model BS), with a flange connection (model F or PF) or for standard wall mounting (model G or A).

Advantages:

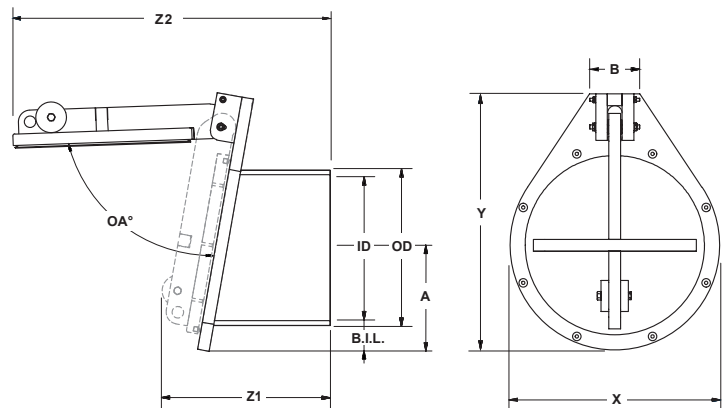
- Made of durable material, HDPE and SS316L.
- Light weight, easy to install.
- Design life of 50 years.
- Maintenance free.
- Fast opening moment, no accumulation of dirt in pipe.
- As from Ø 500 mm the flap valve will be equipped with 2 hinge systems.
- Will act as double hung, by means of special designed sleeve in hinge frame.
- Opening angle is limited, so it can't remain open.
- High UV protection.
- Easy replaceable lip seal.

Other options:

- Wall mounting (model ATK-G and ATK-A).
- Flange connection (model ATK-F and ATK-PF).
- Spigot end to be inserted in existing pipe (model ATK-BS).
- Opening moments of the flap valve can be adjusted on request.

Installation:

- The flap valve shall be suitable for socket/coupling connection.



type Freedrain®	ID mm.	OD mm.	B.I.L. mm.	X mm.	Y mm.	Z1 mm.	Z2 mm.	A mm.	B mm.	opening angle	approx. weight
670.ATK.0110S	Ø 103	Ø 110	71	250	385	± 275	430	123	130	± 78°	±4 kg.
670.ATK.0125S	Ø 117	Ø 125	89	300	430	± 275	430	148	130	± 78°	±5 kg.
670.ATK.0160S	Ø 150	Ø 160	73	300	430	± 320	510	148	130	± 78°	±5 kg.
670.ATK.0200S	Ø 188	Ø 200	73	340	470	± 325	550	167	130	± 78°	±6 kg.
670.ATK.0250S	Ø 235	Ø 250	75	390	520	± 340	610	192	130	± 78°	±8 kg.
670.ATK.0315S	Ø 296	Ø 315	69	440	570	± 380	690	217	130	± 78°	±10 kg.
670.ATK.0400S	Ø 376	Ø 400	78	540	670	± 480	870	266	130	± 78°	±17 kg.
670.ATK.0500S	Ø 470	Ø 500	85	650	750	± 520	970	320	378	± 78°	±26 kg.
670.ATK.0630S	Ø 600	Ø 630	69	750	850	± 610	1130	369	378	± 78°	±34 kg.

Dimensions in millimeters, weights in kilograms. Subject to changes in images, dimensions and description. Placement, installation and use in accordance with our regulations.