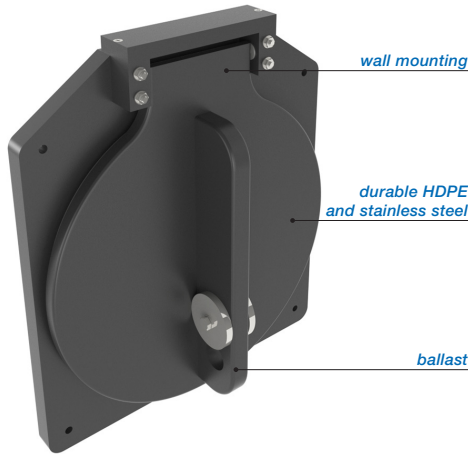


## FLAP VALVE - HDPE / SS316L TYPE WALL MOUNTING (GV), Ø110 - 500 MM.



The Freedrain® non-return valve with square frame plate is even lighter in weight and is installed mostly above the waterline (in surface water / sewage / in case of emergency / flood protection), regulating a water flow in a single direction and preventing any back flow. To be applied practically in all kinds of environments with free flow / gravitation. These flap valves are manufactured in our own factory, from high quality HDPE, which is lightweight material and has a high chemical resistance. The flap valve will be equipped with SS316L hinge pins and extra ballast weight to prevent the flap valve door from floating. To reduce the number of fixing points till DN 500 mm, the frame plate will be equipped with a special EPDM lip seal as well. The larger flap valves will be equipped with stronger HDPE ribs instead of SS316L reinforcement profiles.

The On-seating tightening shall be effected by means of a special EPDM lip seal to withstand 1 meter water column (long duration - 50 years) above the culvert and 5 meter water column from bottom invert (short duration - 72 hours) without any visible deformation. The flap valves shall be water tight in on-seating situation.

The ATK-GV version is suitable for wall mounting. However the flap valves can be supplied with a spigot end (model S or Model BS) or with flange connections (model F).

### Advantages:

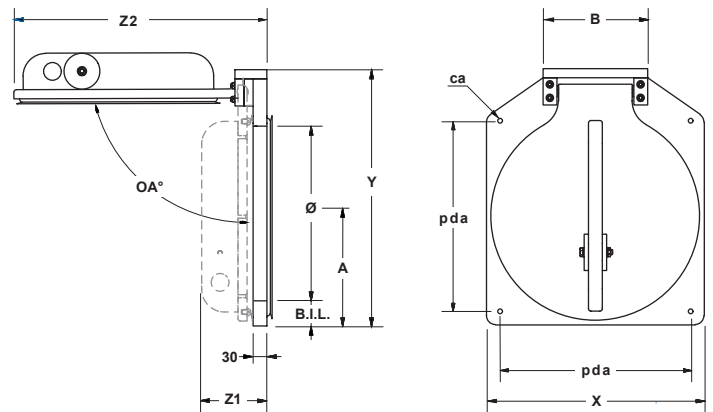
- Less fixing points till Ø 500 mm.
- Quicker installation till Ø 500 mm.
- Lighter weight , easy to install.
- Made of durable material, HDPE and SS316L.
- Maintenance free.
- Fast opening moment, no accumulation of dirt in pipe.
- Will act as double hung, by means of special designed sleeve in hinge frame.
- High UV protection.
- Easy replaceable lip seal.

### Other options:

- Wall mounting (model ATK-G and ATK-A).
- Flange connection (model ATK-F or ATK-PF).
- Spigot end for connecting with socket/coupling (model ATK-S) or to be inserted in existing pipe (model ATK-BS).
- Opening moments of the flap valve can be adjusted on request.

### Installation:

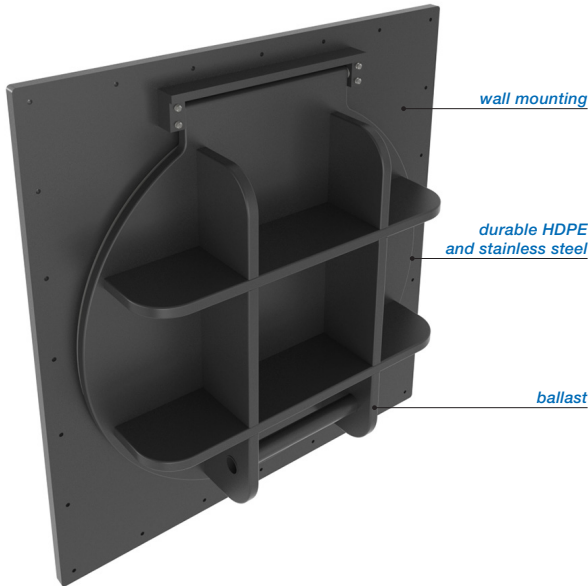
- The flap valve shall be mounted perpendicularly and free of tension to a flat wall. By preference mounting has to be done with stainless steel A4 fixing anchors. As per our installation instructions.



type Freedrain®	Ø mm.	B.I.L. mm.	X mm.	Y mm.	Z1 mm.	Z2 mm.	A mm.	B mm.	opening angle	pda mm.	chemical anchors	approx. weight
670.ATK.0100GV	Ø 100	45	200	270	115	± 260	95	150	max. 120°	150 x 150	M8 x110 (4x)	±3 kg.
670.ATK.0150GV	Ø 150	45	250	320	140	± 310	120	150	max. 120°	180 x 180	M8 x110 (4x)	±5 kg.
670.ATK.0200GV	Ø 200	40	290	365	140	± 370	140	200	max. 120°	230 x 230	M8 x110 (4x)	±6 kg.
670.ATK.0250GV	Ø 250	40	340	415	140	± 420	165	200	max. 120°	280 x 280	M8 x110 (4x)	±7 kg.
670.ATK.0300GV	Ø 300	47,5	405	475	155	± 460	197,5	248	max. 120°	330 x 330	M8 x110 (4x)	±8 kg.
670.ATK.0400GV	Ø 400	40	480	565	140	± 560	240	248	max. 120°	420 x 420	M8 x110 (4x)	±13 kg.
670.ATK.0500GV	Ø 500	40	580	660	140	± 640	290	380	max. 120°	520 x 520	M8 x110 (4x)	±18 kg.

Dimensions in millimeters, weights in kilograms. Subject to changes in images, dimensions and description. Placement, installation and use in accordance with our regulations.

## FLAP VALVE - HDPE / SS316L TYPE WALL MOUNTING (GV), Ø600 - 1000 MM.



The Freedrain® non-return valve with square frame plate is even lighter in weight and is installed mostly above the waterline (in surface water / sewage / in case of emergency / flood protection), regulating a water flow in a single direction and preventing any back flow. To be applied practically in all kinds of environments with free flow / gravitation. These flap valves are manufactured in our own factory, from high quality HDPE, which is lightweight material and has a high chemical resistance. The flap valve will be equipped with SS316L hinge pins and extra ballast weight to prevent the flap valve door from floating. To reduce the number of fixing points till DN 500 mm, the frame plate will be equipped with a special EPDM lip seal as well. The larger flap valves will be equipped with stronger HDPE ribs instead of SS316L reinforcement profiles.

The On-seating tightening shall be effected by means of a special EPDM lip seal to withstand 1 meter water column (long duration - 50 years) above the culvert and 5 meter water column from bottom invert (short duration - 72 hours) without any visible deformation. The flap valves shall be water tight in on-seating situation.

The ATK-GV version is suitable for wall mounting. However the flap valves can be supplied with a spigot end (model S or Model BS) or with flange connections (model F).

### Advantages:

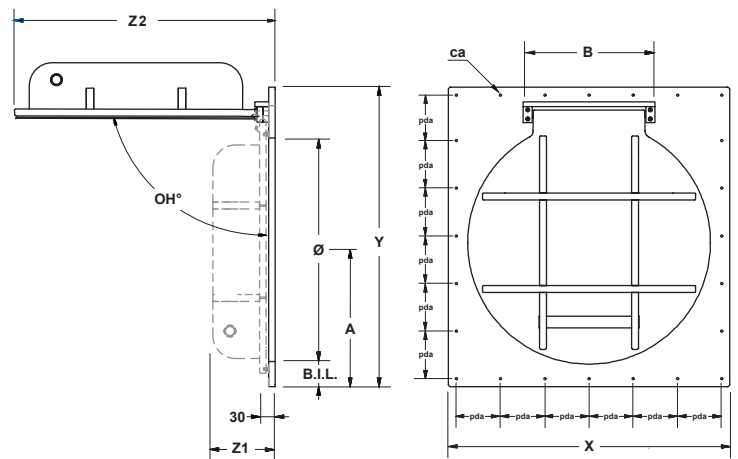
- Less fixing points till Ø 500 mm.
- Quicker installation till Ø 500 mm.
- Lighter weight, easy to install.
- Made of durable material, HDPE and SS316L.
- Maintenance free.
- Fast opening moment, no accumulation of dirt in pipe.
- Will act as double hung, by means of special designed sleeve in hinge frame.
- High UV protection.
- Easy replaceable lip seal.

### Other options:

- Wall mounting (model ATK-G and ATK-A).
- Flange connection (model ATK-F or ATK-PF).
- Spigot end for connecting with socket/coupling (model ATK-S) or to be inserted in existing pipe (model ATK-BS).
- Opening moments of the flap valve can be adjusted on request.

### Installation:

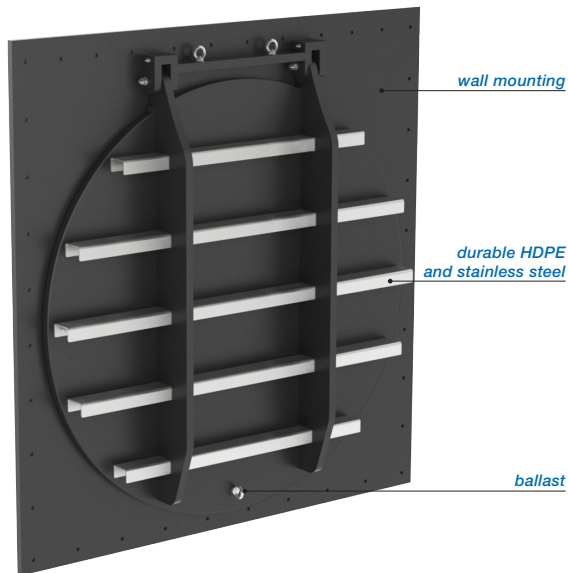
- The flap valve shall be mounted perpendicularly and free of tension to a flat wall. By preference mounting has to be done with stainless steel A4 fixing anchors. As per our installation instructions.



type Freedrain®	Ø mm.	B.I.L. mm.	X mm.	Y mm.	Z1 mm.	Z2 mm.	A mm.	B mm.	opening angle	pda mm.	chemical anchors	approx. weight
670.ATK.0600GV	Ø 600	150	900	950	165	± 760	450	380	max. 100°	variable	M8 x110 (16x)	±25 kg.
670.ATK.0700GV	Ø 700	150	1000	1050	180	± 850	500	380	max. 100°	variable	M8 x110 (16x)	±32 kg.
670.ATK.0800GV	Ø 800	150	1100	1050	200	± 950	550	380	max. 100°	variable	M8 x110 (16x)	±43 kg.
670.ATK.0900GV	Ø 900	135	1140	1220	240	± 1060	585	480	max. 100°	variable	M8 x110 (20x)	±53 kg.
670.ATK.1000GV	Ø 1000	135	1240	1320	280	± 1160	635	580	max. 100°	variable	M8 x110 (24x)	±68 kg.

Dimensions in millimeters, weights in kilograms. Subject to changes in images, dimensions and description. Placement, installation and use in accordance with our regulations.

## FLAP VALVE - HDPE / SS316L TYPE WALL MOUNTING (GV), Ø1100 - 1500 MM.



The Freedrain® non-return valve with square frame plate is even lighter in weight and is installed mostly above the waterline (in surface water / sewage / in case of emergency / flood protection), regulating a water flow in a single direction and preventing any back flow. To be applied practically in all kinds of environments with free flow / gravitation. These flap valves are manufactured in our own factory, from high quality HDPE, which is lightweight material and has a high chemical resistance. The flap valve will be equipped with SS316L hinge pins and extra ballast weight to prevent the flap valve door from floating. To reduce the number of fixing points till DN 500 mm, the frame plate will be equipped with a special EPDM lip seal as well. The larger flap valves will be equipped with stronger HDPE ribs instead of SS316L reinforcement profiles.

The On-seating tightening shall be effected by means of a special EPDM lip seal to withstand 1 meter water column (long duration - 50 years) above the culvert and 5 meter water column from bottom invert (short duration - 72 hours) without any visible deformation. The flap valves shall be water tight in on-seating situation.

The ATK-GV version is suitable for wall mounting. However the flap valves can be supplied with a spigot end (model S or Model BS) or with flange connections (model F).

### Advantages:

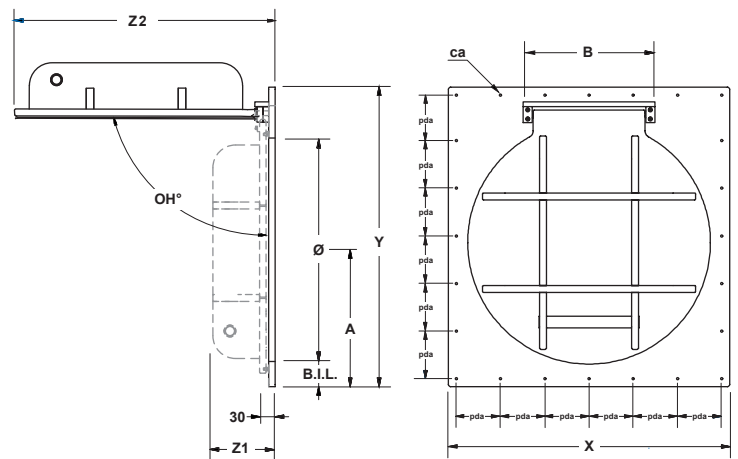
- Less fixing points till Ø 500 mm.
- Quicker installation till Ø 500 mm.
- Lighter weight , easy to install.
- Made of durable material, HDPE and SS316L.
- Maintenance free.
- Fast opening moment, no accumulation of dirt in pipe.
- Will act as double hung, by means of special designed sleeve in hinge frame.
- High UV protection.
- Easy replaceable lip seal.

### Other options:

- Wall mounting (model ATK-G and ATK-A).
- Flange connection (model ATK-F or ATK-PF).
- Spigot end for connecting with socket/coupling (model ATK-S) or to be inserted in existing pipe (model ATK-BS).
- Opening moments of the flap valve can be adjusted on request.

### Installation:

- The flap valve shall be mounted perpendicularly and free of tension to a flat wall. By preference mounting has to be done with stainless steel A4 fixing anchors. As per our installation instructions.



type Freedrain®	Ø mm.	B.I.L. mm.	X mm.	Y mm.	Z1 mm.	Z2 mm.	A mm.	B mm.	opening angle	pda mm.	chemical anchors	approx. weight
670.ATK.1100GV	Ø 1100	125	1400	1450	231	± 1278	675	568	max. 78°	variable	M10 x130 (30x)	± 97 kg.
670.ATK.1200GV	Ø 1200	125	1500	1565	229	± 1374	725	608	max. 78°	variable	M10 x130 (30x)	± 106 kg.
670.ATK.1300GV	Ø 1300	125	1580	1560	225	± 1650	775	658	max. 78°	variable	M10 x130 (32x)	± 134 kg.
670.ATK.1400GV	Ø 1400	125	1700	1750	235	± 1580	825	708	max. 78°	variable	M10 x130 (34x)	± 149 kg.
670.ATK.1500GV	Ø 1500	125	1800	1875	245	± 1646	875	758	max. 78°	variable	M10 x130 (38x)	± 166 kg.

Dimensions in millimeters, weights in kilograms. Subject to changes in images, dimensions and description. Placement, installation and use in accordance with our regulations.