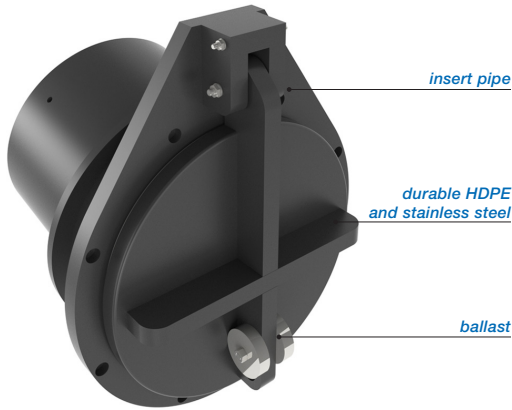


FLAP VALVE - HDPE / SS316L TYPE PUSH FIT (BS), Ø300 - 700 MM.



The Freedrain® non-return valve is standard mounted at an angle of 10 degrees. The flap valve will mostly installed partly or completely submerged (in surface water / sewage / in case of emergency / flood protection), regulating a water flow in a single direction and preventing any back flow. The flap valve can be applied practically in all kinds of environments with free flow / gravitation. These flap valves are manufactured in our own factory from high quality HDPE, which is lightweight material and has a high chemical resistance. The flap valve will be equipped with SS316L hinge pins and extra ballast weight to prevent the flap valve door from floating. The larger flap valves will be equipped with SS316L reinforcement profiles.

The On-seating tightening shall be effected by means of a special EDPM lip seal to withstand 1 meter water column (long duration - 50 years) above the culvert and 5 meter water column from bottom invert (short duration - 72 hours) without any visible deformation. The flap valves shall be water tight in on-seating situation.

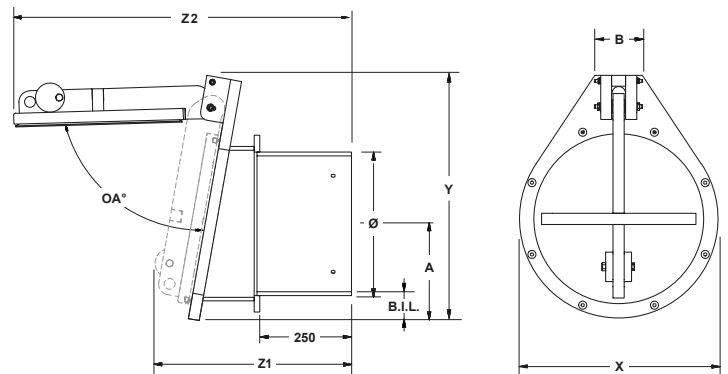
The ATK-BS version with spigot is suitable for mounting as an insert pipe. However, the flap valve can also be supplied with a flange connection (model F or PF), with spigot end (model S) or for standard wall mounting (model G or A).

Advantages:

- Made of durable material, HDPE and SS316L.
- Light weight, easy to install.
- Design life of 50 years.
- Maintenance free.
- Fast opening moment, no accumulation of dirt in pipe.
- As from Ø 500 mm the flap valve will be equipped with 2 hinge systems.
- Will act as double hung, by means of special designed sleeve in hinge frame.
- Opening angle is limited, so it can't remain open.
- High UV protection.
- Easy replaceable lip seal.

Other options:

- Wall mounting (model ATK-G and ATK-A)
- Flange connection (model ATK-F and ATK-PF)
- Spigot end for connecting with socket/coupling (model ATK-S)
- Opening moments of the flap valve can be adjusted on request.



Installation:

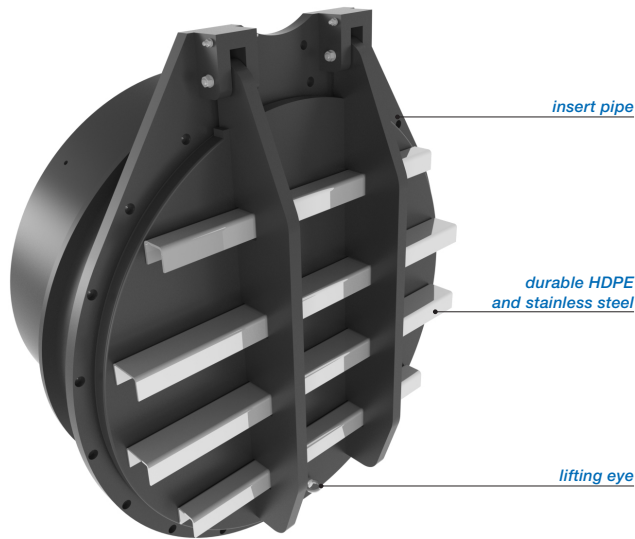
- The flap valve shall be suitable to be inserted in concrete or steel pipe.



type Freedrain®	Ø mm.	B.I.L. mm.	X mm.	Y mm.	Z1 mm.	Z2 mm.	A mm.	B mm.	opening angle	approx. weight
670.ATK.0300BS	Ø 290	84	440	570	510	± 820	219	130	± 78°	±12 kg.
670.ATK.0400BS	Ø 390	84	540	670	540	± 920	269	130	± 78°	±18 kg.
670.ATK.0500BS	Ø 490	94	650	700	565	± 1010	342	378	± 78°	±28 kg.
670.ATK.0600BS	Ø 590	94	750	850	580	± 1115	374	378	± 78°	±35 kg.
670.ATK.0700BS	Ø 690	94	970	970	615	± 1220	424	378	± 78°	±46 kg.

Dimensions in millimeters, weights in kilograms. Subject to changes in images, dimensions and description. Placement, installation and use in accordance with our regulations.

FLAP VALVE - HDPE / SS316L TYPE PUSH FIT (BS), Ø800 - 1000 MM.



The Freedrain® non-return valve is standard mounted at an angle of 10 degrees. The flap valve will mostly installed partly or completely submerged (in surface water / sewage / in case of emergency / flood protection), regulating a water flow in a single direction and preventing any back flow. The flap valve can be applied practically in all kinds of environments with free flow / gravitation. These flap valves are manufactured in our own factory from high quality HDPE, which is lightweight material and has a high chemical resistance. The flap valve will be equipped with SS316L hinge pins and extra ballast weight to prevent the flap valve door from floating. The larger flap valves will be equipped with SS316L reinforcement profiles.

The On-seating tightening shall be effected by means of a special EDPM lip seal to withstand 1 meter water column (long duration - 50 years) above the culvert and 5 meter water column from bottom invert (short duration - 72 hours) without any visible deformation. The flap valves shall be water tight in on-seating situation.

The ATK-BS version with spigot is suitable for mounting as an insert pipe. However, the flap valve can also be supplied with a flange connection (model F or PF), with spigot end (model S) or for standard wall mounting (model G or A).

Advantages:

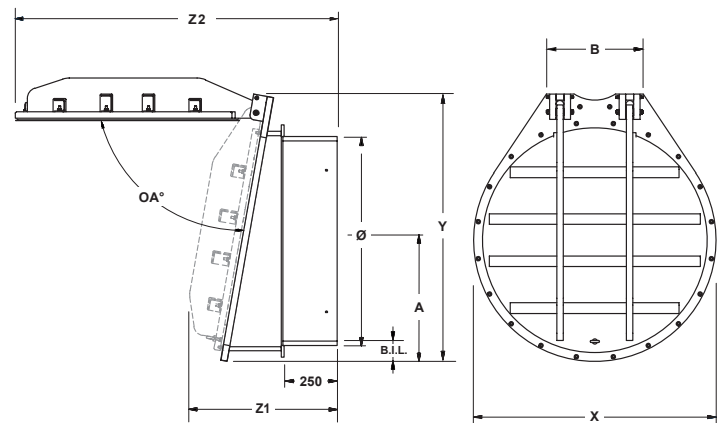
- Made of durable material, HDPE and SS316L.
- Light weight, easy to install.
- Design life of 50 years.
- Maintenance free.
- Fast opening moment, no accumulation of dirt in pipe.
- As from Ø 500 mm the flap valve will be equipped with 2 hinge systems.
- Will act as double hung, by means of special designed sleeve in hinge frame.
- Opening angle is limited, so it can't remain open.
- High UV protection.
- Easy replaceable lip seal.

Other options:

- Wall mounting (model ATK-G and ATK-A).
- Flange connection (model ATK-F and ATK-PF).
- Spigot end for connecting with socket/coupling (model ATK-S).
- Opening moments of the flap valve can be adjusted on request.

Installation:

- The flap valve shall be suitable to be inserted in concrete or steel pipe.



type Freedrain®	Ø mm.	B.I.L. mm.	X mm.	Y mm.	Z1 mm.	Z2 mm.	A mm.	B mm.	opening angle	approx. weight
670.ATK.0800BS	Ø 790	99	950	1065	645	± 1330	474	418	± 78°	±12 kg.
670.ATK.0900BS	Ø 890	99	1050	1165	655	± 1430	524	438	± 78°	±18 kg.
670.ATK.1000BS	Ø 990	99	1150	1270	700	± 1530	574	438	± 78°	±46 kg.

Dimensions in millimeters, weights in kilograms. Subject to changes in images, dimensions and description. Placement, installation and use in accordance with our regulations.