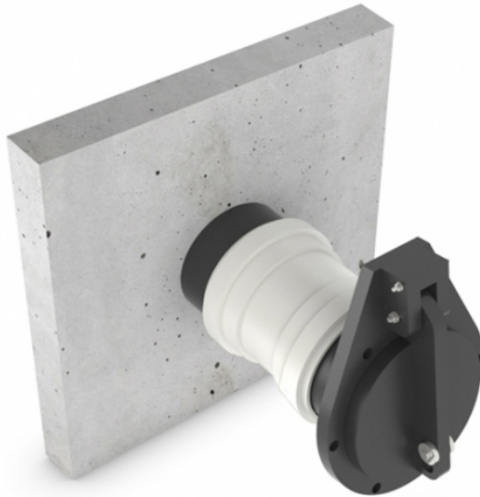


HDPE FLAP VALVE, SPIGOT-END 10° ANGLE, Ø100 - Ø800 MM. ATK-S



Pipe mounted HDPE Flap Valve ATK-S with spigot-end
Opening Ø100 mm - Ø800 mm. 5 M.w.c. On seating.

This HDPE non-return valve is mostly installed partly or completely submerged (in surface water / sewage / in case of emergency / flood protection), regulating a water flow in a single direction and preventing any back flow. To be applied practically in all kinds of environments with free flow / gravitation.

The flap valve is hung at a 10 degree angle to ensure a water tight seal and can be mounted on a pipe with a coupler (coupler not included).

Standard water pressure will be 1 M.w.c. from top of culvert on seating long duration (50 years).
5 M.w.c. from invert level on seating short duration (72 hours)

Freedrain flap valves with stainless steel hinge pins are equipped with HDPE ribs. Bigger



dimensions shall be reinforced with stainless steel U-profiles. They can also be manufactured in a custom made size or shape (square /rectangular), or designed to suit other operating water pressures.

Materials used:

- HDPE
- SS316L
- EPDM sealing

Advantages of the Freedrain flap valve:

- Design life of 50 years
- First class materials used
- Maintenance free
- Fast opening moment, so no accumulation of dirt in the pipe
- Light weight and easy handling.
- Easy to adjust design for custom made requirements.
- High UV protection
- Easy replaceable Lip seal

SKU: 670ATK-S | **Category:** [Flap Valves](#) | **Tags:** [Flap Valve](#), [Flood protection](#), [HDPE](#), [Light Weight](#), [Stainless steel](#)

VARIATIONS

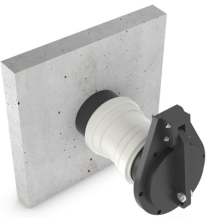
Image	SKU	Price	Description	Diameter Ø
	ATK0100S			100

Image	SKU	Price	Description	Diameter Ø
	ATK0125S			125
	ATK0150S			150
	ATK0200S			200
	ATK0250S			250

Image	SKU	Price	Description	Diameter Ø
	ATK0300S			300
	ATK0400S			400
	ATK0500S			500
	ATK0600S			600

Image	SKU	Price	Description	Diameter Ø
	ATK0700S			700
	ATK0800S			800

PRODUCT DESCRIPTION

Pipe mounted HDPE Flap Valve Type ATK-S

[Download product sheet](#)

Type	ATK-S
Material flape valve door	HDPE, High Density Polyethylene
Material frame plate	HDPE, High Density Polyethylene
Material Hinges	Stainless steel 316L 1.4404
Material Sealing flap valve door	EPDM, Ethylene Propylene Diene Monomer
Material Sealing frame plate	Neoprene
Material ballastweight	Stainless steel 316L 1.4404
MWC	1-5 mwc
Opening	Ø 110 - Ø 800 mm
Options	Socket



Modifications and errors reserved.



ADDITIONAL INFORMATION

Diameter Ø 100, 125, 150, 200, 250, 300, 400, 500, 600, 700, 800