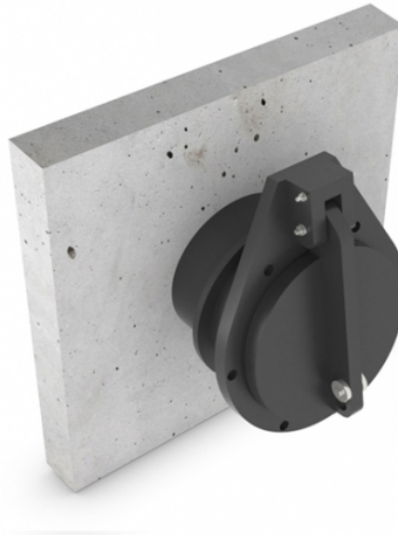


HDPE FLAP VALVE, PUSH FIT SPIGOT-END 10° ANGLE, Ø300 - Ø1200 MM. ATK-BS



Pipe mounted HDPE Flap Valve ATK-BS with spigot-end
Opening Ø300 mm - Ø1200 mm. 5 M.w.c. On seating.

This HDPE non-return valve is mostly installed partly or completely submerged (in surface water / sewage / in case of emergency / flood protection), regulating a water flow in a single direction and preventing any back flow. To be applied practically in all kinds of environments with free flow / gravitation.

The flap valve is hung at a 10 degree angle to ensure a water tight seal. This version is suitable for mounting as an insert pipe. Easy to install ("push-fit").

Standard water pressure will be 1 M.w.c. from top of culvert on seating long duration (50 years).
5 M.w.c. from invert level on seating short duration (72 hours)

Freedrain flap valves with stainless steel hinge pins are equipped with HDPE ribs. Bigger



dimensions shall be reinforced with stainless steel U-profiles. They can also be manufactured in a custom made size or shape (square /rectangular), or designed to suit other operating water pressures.

Materials used:

- HDPE
- SS316L
- EPDM sealing

Advantages of the Freedrain flap valve:

- Design life of 50 years
- First class materials used
- Maintenance free
- Fast opening moment, so no accumulation of dirt in the pipe
- Light weight and easy handling.
- Easy to adjust design for custom made requirements.
- High UV protection
- Easy replaceable Lip seal

SKU: 670ATK-BS | **Category:** [Flap Valves](#) | **Tags:** [Flap Valve](#), [Flood protection](#), [HDPE](#), [Light Weight](#), [Stainless steel](#)

VARIATIONS


Image	SKU	Price	Description	Diameter Ø
	670ATK0800BS			800

Image	SKU	Price	Description	Diameter Ø
	670ATK0900BS			900
	670ATK1000BS			1000
	670ATK1100BS			1100
	670ATK1200BS			1200



Image	SKU	Price	Description	Diameter Ø
	670ATK0300BS			300
	670ATK0400BS			400
	670ATK0500BS			500
	670ATK0600BS			600



Image

SKU

Price Description

Diameter Ø



670ATK0700BS

700

PRODUCT DESCRIPTION

[Flap valve overview - ATK-G Ø100 - 1000](#)

Pipe mounted HDPE Flap Valve Type ATK-BS

Type	ATK-BS
Material flap valve door	HDPE, High Density Polyethylene
Material frame plate	HDPE, High Density Polyethylene
Material Hinges	Stainless steel 316L 1.4404
Material Sealing flap valve door	EPDM, Ethylene Propylene Diene Monomer
Material Sealing frame plate	Neoprene
Material ballastweight	Stainless steel 316L 1.4404
MWC	1-5 mwc
Opening	Ø 300 - Ø 1200 mm.
Options	Not applicable

Modifications and errors reserved.



ADDITIONAL INFORMATION

Diameter Ø 300, 400, 500, 600, 700, 800, 900, 1000, 1100, 1200