

HANDSLIDE, 1MWC, WALL MOUNTED, TYPE AHA-G



The Freedrain handslides are used in surface water, sewerage systems, (sewerage) water treatment systems etc. to (temporarily) block or allow to pass water

They are manufactured from high quality HDPE. HDPE is lightweight and has a high chemical resistance.

Type AHA-G is the standard "wall mounted" version. To ensure watertightness the wall must be flat.

The handslide contains a vertically moving door which can block the water supply on both sides (on seating / off seating). Tightening shall be effected by means of a special EPDM flat/lip shaped rubber profile to withstand 1 meter water column pressure on both sides, without any visible deformation.



Materials used:

- HDPE
- EPDM sealing

Advantages of the Freedrain handslides:

- Design life of 50 years.
- First class materials used.
- Less maintenance.
- Light weight and easy handling.
- Easy to adjust the design for custom made requirements.
- High UV protection.
- Easy replaceable Lip seal.

SKU: 670AHA-G | **Category:** [Penstocks](#) | **Tags:** [Flood protection](#), [HDPE](#), [Light Weight](#), [Penstock](#), [Stainless steel AUMA](#)

VARIATIONS

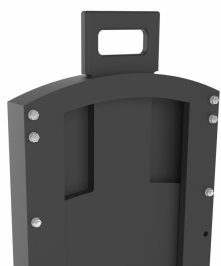


Image

SKU

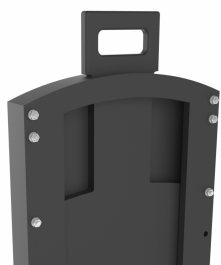
Price Description

Diameter Ø



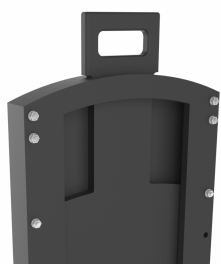
670AHA0100G

100



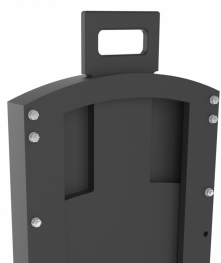
670AHA0125G

125



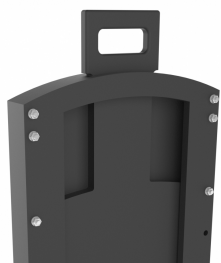
670AHA0150G

150



670AHA0200G



200



670AHA0250G

250



Image	SKU	Price	Description	Diameter Ø
	670AHA0300G			300
	670AHA0400G			400
	670AHA0500G			500

PRODUCT DESCRIPTION

Wall mounted Handslide TYPE AHA-G

Type	AHA-G
Material Bridge	HDPE
Material Guides	HDPE
Material Frame Plate	HDPE
Material Sealing Door / Frame Plate	EPDM
Material Sealing Penstock / Concrete	NEOPREEN





ADDITIONAL INFORMATION

Diameter Ø 100, 125, 150, 200, 250, 300, 400, 500